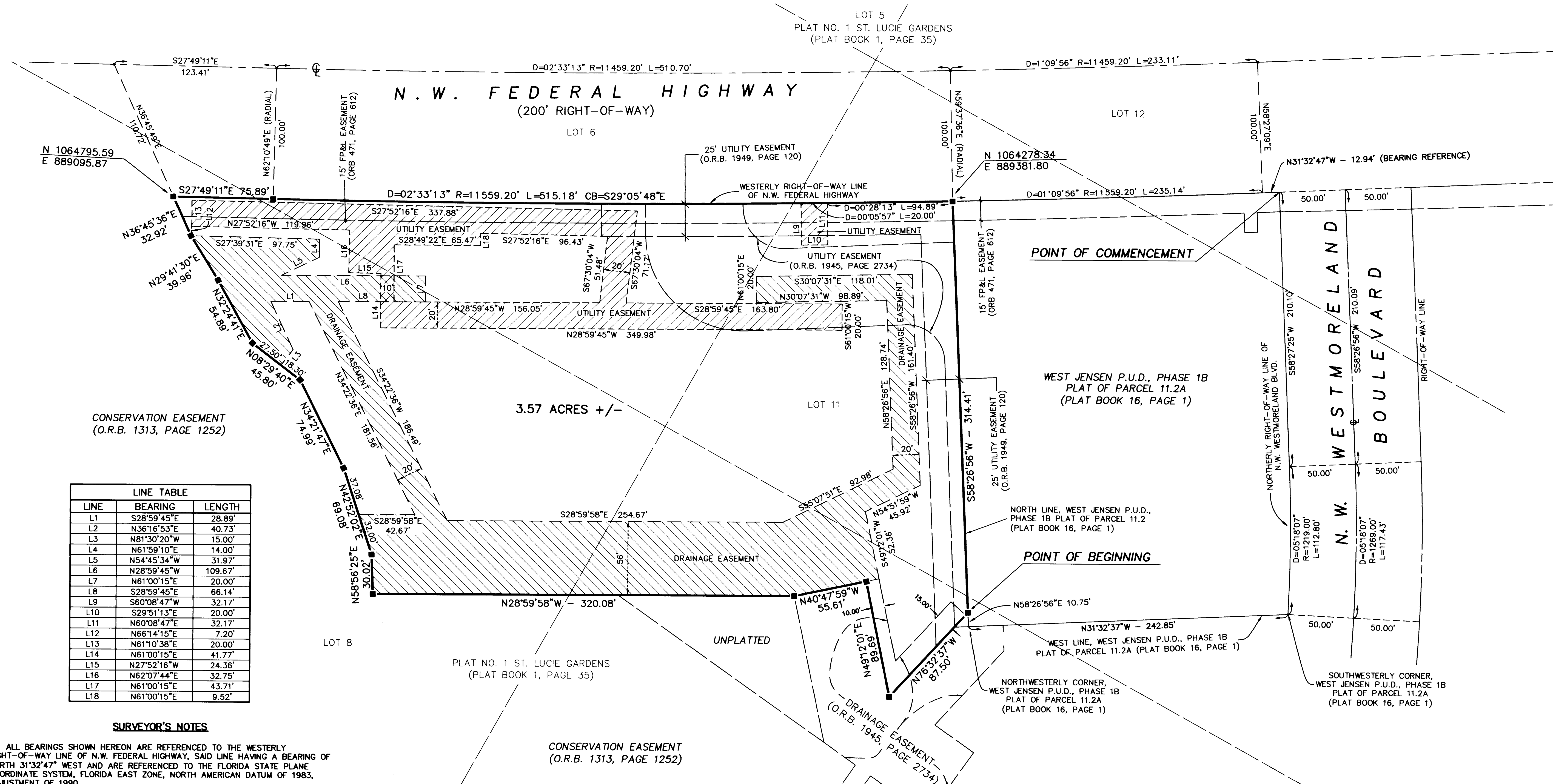
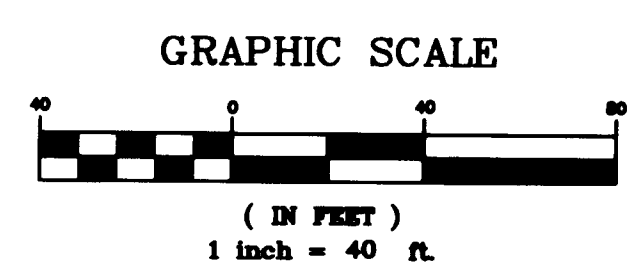
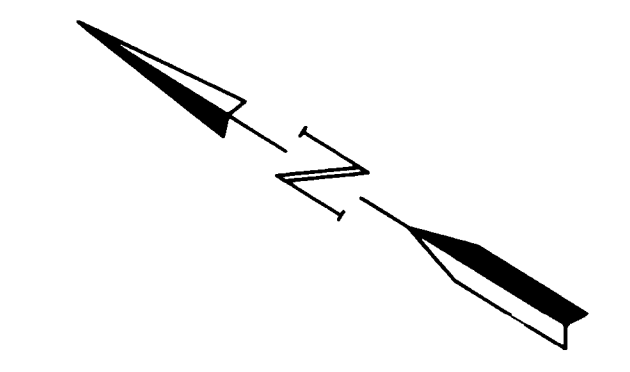


# West Jensen P.U.D., Phase 1B Plat of Parcel 11.2B

**BEING A REPLAT OF A PORTION OF LOTS 6, 8, 9 & 11 BLOCK 2, PLAT NO.1 ST. LUCIE GARDENS, PLAT BOOK 1, PAGE 35, PUBLIC RECORDS OF ST. LUCIE (NOW MARTIN) COUNTY, FLORIDA. SAID PARCEL OF LAND LYING IN SECTION 18, TOWNSHIP 37 SOUTH, RANGE 41 EAST, MARTIN COUNTY, FLORIDA**



LINE	BEARING	LENGTH
L1	S28°59'45"E	28.89'
L2	N36°16'53"E	40.73'
L3	N81°30'20"W	15.00'
L4	N61°59'10"E	14.00'
L5	N54°45'34"W	31.97'
L6	N28°59'45"W	109.67'
L7	N61°00'15"E	20.00'
L8	S28°59'45"E	66.14'
L9	S60°08'47"W	32.17'
L10	S29°51'13"E	20.00'
L11	N60°08'47"E	32.17'
L12	N66°14'15"E	7.20'
L13	N61°10'38"E	20.00'
L14	N61°00'15"E	41.77'
L15	N27°52'16"W	24.36'
L16	N62°07'44"E	32.75'
L17	N61°00'15"E	43.71'
L18	N61°00'15"E	9.52'

**SURVEYOR'S NOTES**

- 1) ALL BEARINGS SHOWN HEREON ARE REFERENCED TO THE WESTERLY RIGHT-OF-WAY LINE OF N.W. FEDERAL HIGHWAY, SAID LINE HAVING A BEARING OF NORTH 31°32'47" WEST AND ARE REFERENCED TO THE FLORIDA STATE PLANE COORDINATE SYSTEM, FLORIDA EAST ZONE, NORTH AMERICAN DATUM OF 1983, ADJUSTMENT OF 1990.
- 2) ALL COORDINATES SHOWN HEREON ARE REFERENCED TO THE FLORIDA STATE PLANE COORDINATE SYSTEM, FLORIDA EAST ZONE, NORTH AMERICAN DATUM OF 1983, ADJUSTMENT OF 1990.
- 3) THERE SHALL BE NO BUILDINGS OR ANY OTHER KIND OF CONSTRUCTION OR TREES OR SHRUBS PLACED ON DRAINAGE EASEMENTS OR UTILITY EASEMENTS.
- 4) THIS PLAT, AS RECORDED IN ITS ORIGINAL FORM IN THE PUBLIC RECORDS, IS THE OFFICIAL DEPICTION OF THE SUBDIVIDED LANDS DESCRIBED HEREON AND WILL IN NO CIRCUMSTANCES BE SUPPLANTED IN AUTHORITY BY ANY OTHER FORM OF THE PLAT, WHETHER GRAPHIC OR DIGITAL.
- 5) THERE MAY BE ADDITIONAL RESTRICTIONS THAT ARE NOT RECORDED ON THIS PLAT THAT MAY BE FOUND IN THE PUBLIC RECORDS OF MARTIN COUNTY.

**LEGEND**

- = SET PERMANENT REFERENCE MONUMENT (PRM)
- 4"x4" CONCRETE MONUMENT WITH DISK LABELED "GCY, INC. LB 4108, PSM 4864"
- D = DELTA (CENTRAL ANGLE)
- L = ARC LENGTH
- R = RADIUS
- CB = CHORD BEARING
- F.P.&L. = FLORIDA POWER & LIGHT
- L.B. = SURVEYING AND MAPPING BUSINESS
- O.R.B. = OFFICIAL RECORD BOOK
- P.S.M. = PROFESSIONAL SURVEYOR & MAPPER
- ⊕ = CENTERLINE

Job Number 05-1041-02-02  
Licensed Business #4108

**INCORPORATED**  
PROFESSIONAL SURVEYORS AND MAPPERS  
CERTIFICATE OF AUTHORIZATION LB 4108

CORPORATE OFFICE: TALLAHASSEE OFFICE  
PO BOX 1469 • 1505 SW MARTIN HWY. 4909 N. MONROE STREET  
PALM CITY, FL 34991 TALLAHASSEE, FL 32305  
(800) 366-1066 (800) 536-9455